



EQUIPAMIENTO PARA VESTUARIOS
FIXTURES & FITTINGS FOR LOCKER ROOMS



8.1. Bancos para vestuario

8.05 Estructuras bancos para vestuario

8.1. Changing room bench

8.05 Structures changing room benchLine

8.2. Herrajes para vestuarios

- 8.09 Herrajes para cabinas sanitarias
- 8.12 Perfiles de aluminio para cabinas sanitarias
- 8.14 Herrajes para taquillas
- 8.16 Bisagras de cazoleta Ø26
- 8.18 Pies para taquillas

8.2. Changing room fittings

- 8.09 Toilet Partition fittings
- 8.12 Aluminium profiles for toilet partition fittings
- 8.14 Locker fittings
- 8.16 Hinges with Ø26 cup
- 8.18 Feet partition hardware

Visita nuestro catálogo web
Visit our web catalogue



CHANGING ROOM BENCH

8.05 Frames changing room bench

Estructuras para bancos de vestuario realizadas en aluminio acabado plata mate, concebidos para realizarlos con tableros de fenólico de 12 / 13mm de espesor y fijados mediante tornillos pasantes suministrados con la estructura.

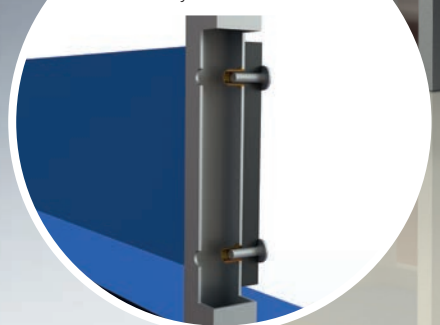
Structures for changing room benches made from matt aluminium plate, designed to be used with 12 - 13 mm thick phenol board and fixed with screws provided with the structure.

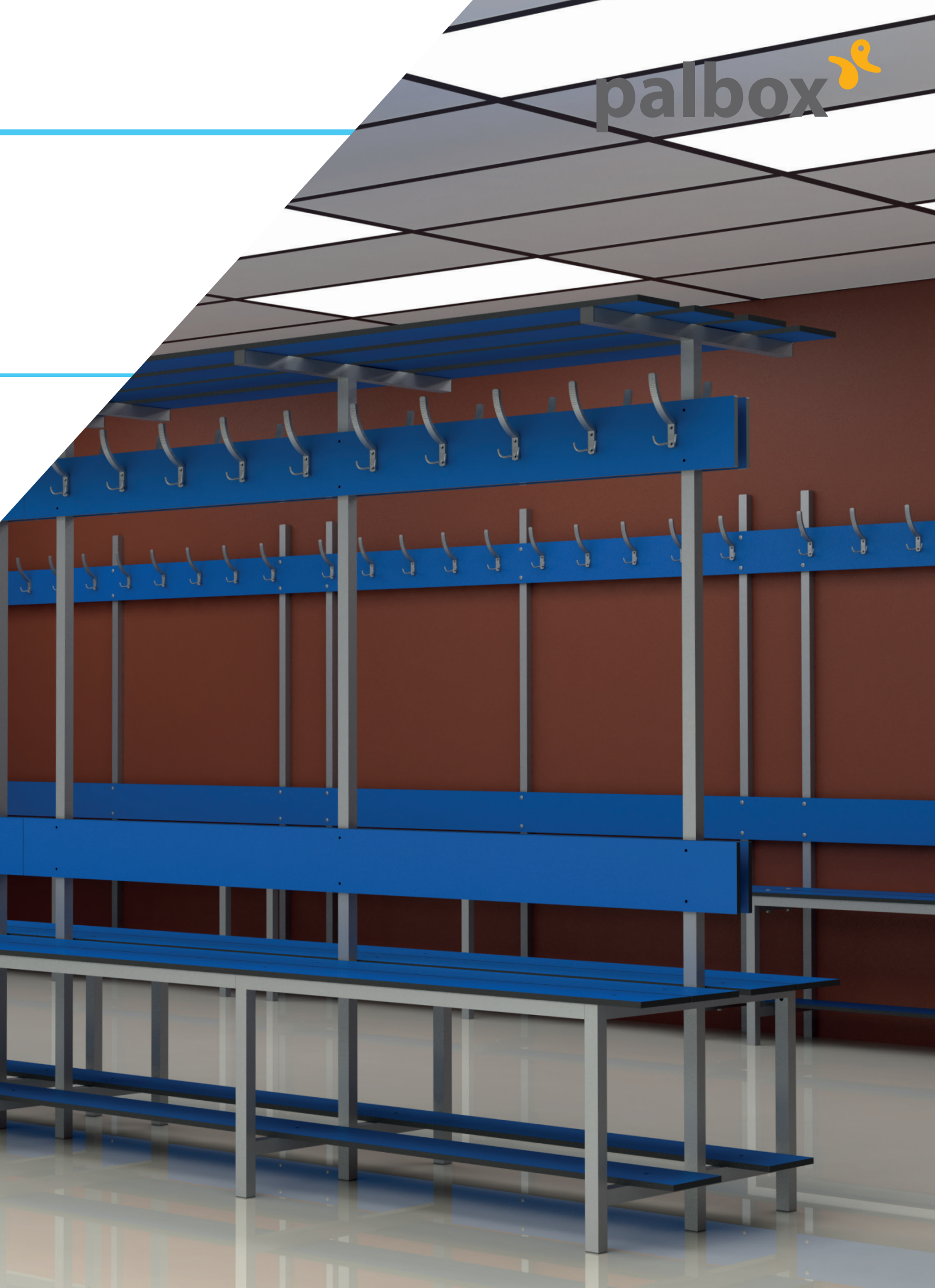


- Montaje tornillos M8x70 y M8x50.
- Assembly screws M8x70 & M8x50.



- Montaje tornillos M6x25.
- Assembly screws M6x25.



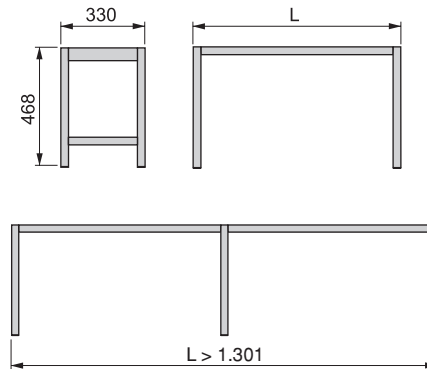


BANCOS VESTUARIO

CHANGING ROOM BENCH

Banco simple

Single bench



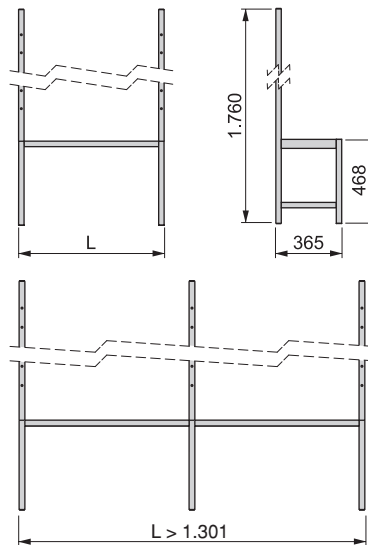
Tamaño Size	L	Cod.		
1000	800	80200	62	1
1500	1300	80201	62	1
2000	1800	80202	62	1

Aluminio / Aluminium

- "L" hasta 1.300 - Incluye 4 tornillos M8x70, 2 tornillos M8x50 y 6 tuercas M8.
- "L" mayor de 1.301 - 6 tornillos M8x70, 3 tornillos M8x50 y 9 tuercas M8
- "L" until 1.300 - 4 Screws M8x70, 2 Screws M8x50 and 6 nuts M8
- "L" more than 1.301 - 6 Screws M8x70, 3 Screws M8x50 and 9 nuts M8

Banco simple con perchero

Single bench with hook



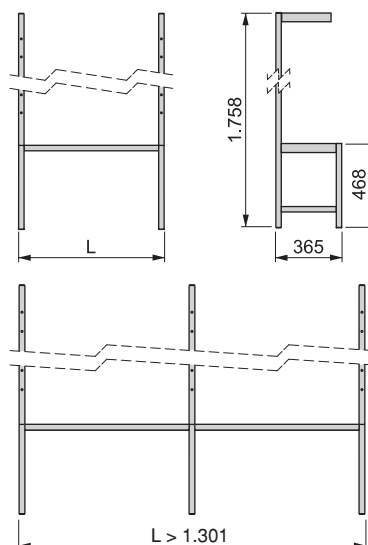
Tamaño Size	Perchas Hooks	L	Cod.		
1000	5	800	80203	62	1
1500	8	1300	80204	62	1
2000	10	1800	80205	62	1

Aluminio / Aluminium

- "L" hasta 1.300 - Incluye 4 tornillos M8x70, 2 tornillos M8x50, 6 tuercas M8 y 8 Tornillos M6x25.
- "L" mayor de 1.301 - 6 tornillos M8x70, 3 tornillos M8x50, 9 tuercas M8 y 12 tornillos M6x25.
- Se incluyen las perchas (ver tabla).
- "L" until 1.300 - 4 Screws M8x70, 2 Screws M8x50, 6 nuts M8 and 8 screws M6x25.
- "L" more than 1.301 - 6 Screws M8x70, 3 Screws M8x50, 9 nuts M8 and 12 Screws M6x25.
- Hooks included (See Table).

Banco simple con perchero y altillo

Single bench with hook and top shelf



Tamaño Size	Perchas Hooks	L	Cod.		
1000	5	800	80206	62	1
1500	8	1300	80207	62	1
2000	10	1800	80208	62	1

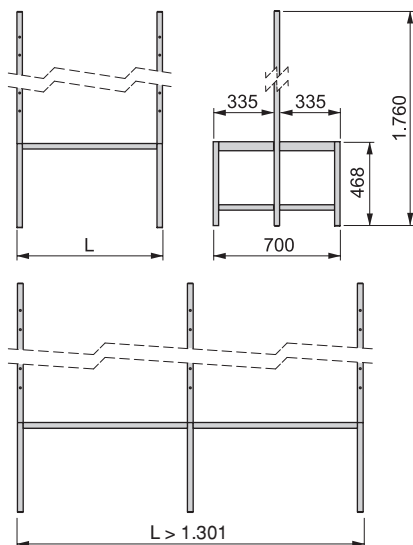
Aluminio / Aluminium

- "L" hasta 1.300 - Incluye 4 tornillos M8x70, 2 tornillos M8x50, 6 tuercas M8 y 12 Tornillos M6x25.
- "L" mayor de 1.301 - 6 tornillos M8x70, 3 tornillos M8x50, 9 tuercas M8 y 18 tornillos M6x25.
- Se incluyen las perchas (ver tabla).
- "L" until 1.300 - 4 Screws M8x70, 2 Screws M8x50, 6 nuts M8 and 12 screws M6x25.
- "L" more than 1.301 - 6 Screws M8x70, 3 Screws M8x50, 9 Nuts M8 and 18 Screws M6x25.
- Hooks included (See Table).

Consultar otras posibles medidas y acabados
Possibility of others measurements and finishes

Banco doble con perchero

Double bench with hook



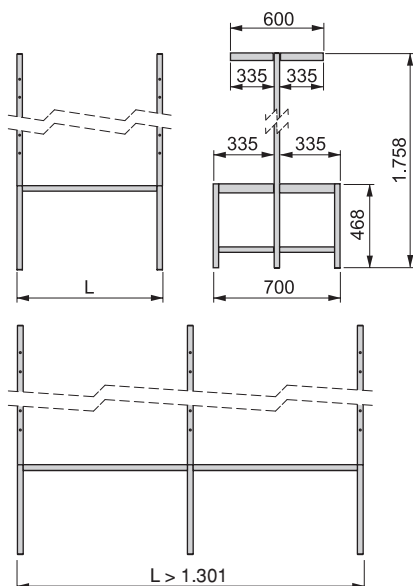
Tamaño Size	Perchas Hooks	L	Cod.		
1000	10	800	80209	62	1
1500	16	1300	80210	62	1
2000	20	1800	80211	62	1

Aluminio / Aluminium

- "L" hasta 1.300 - Incluye 8 tornillos M8x70, 4 tornillos M8x50, 12 tuercas M8 y 16 Tornillos M6x25.
- "L" mayor de 1.301 incluye - 12 tornillos M8x70, 6 tornillos M8x50, 18 tuercas M8 y 24 tornillos M6x25
- Se incluyen las perchas (ver tabla)
- "L" until 1.300 include - 8 Screws M8x70, 4 Screws M8x50, 12 nuts M8 and 16 screws M6x25.
- "L" more than 1.301 include - 12 Screws M8x70, 6 Screws M8x50, 18 Nuts M8 and 18 Screws M6x25 .
- Hooks included (See Table).

Banco doble con perchero y altillo

Double bench with hook and top shelf



Tamaño Size	Perchas Hooks	L	Cod.		
1000	10	800	80212	62	1
1500	16	1300	80213	62	1
2000	20	1800	80214	62	1

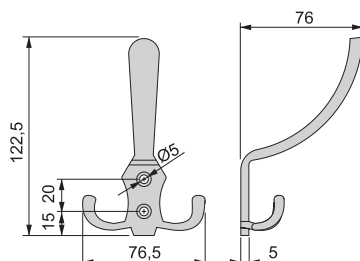
Aluminio / Aluminium

- "L" hasta 1.300 - Incluye 8 tornillos M8x70, 4 tornillos M8x50, 12 tuercas M8 y 24 Tornillos M6x25.
- "L" mayor de 1.301 incluye - 12 tornillos M8x70, 6 tornillos M8x50, 18 tuercas M8 y 36 tornillos M6x25
- Se incluyen las perchas (ver tabla)
- "L" until 1.300 include - 8 Screws M8x70, 4 Screws M8x50, 12 nuts M8 and 24 screws M6x25.
- "L" more than 1.301 include - 12 Screws M8x70, 6 Screws M8x50, 18 Nuts M8 and 36 Screws M6x25 .
- Hooks included (See Table).

Consultar otras posibles medidas y acabados
Possibility of others measurements and finishes

Colgador

Coat and Hat Hook



Cod.		
80115	64	200

Zamak / Zamak.

- Incluye 2 tornillos
- Include 2 Screws

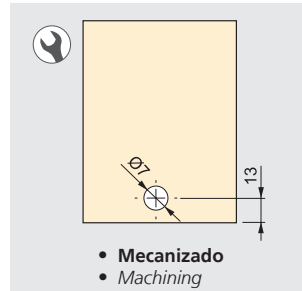


HERRAJES PARA CABINAS SANITARIAS

TOILET PARTITION FITTINGS

Pata regulable 100/180

Adjustable support leg 100/180



- Mecanizado
- Machining

Cod.



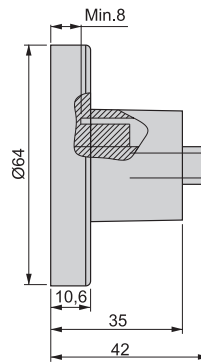
85000	65	4
--------------	-----------	----------

Acero Inx. / Stainless steel

- Incluye 3 tornillos con tacos.
- Include 3 screws with plastic anchor.

Soporte Tubo Ø25 a pared

Support tube Ø25- to wall



Cod.



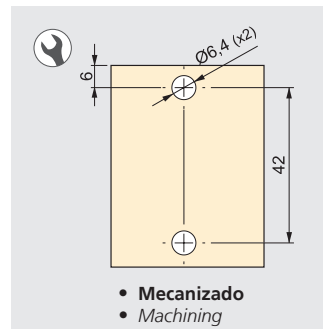
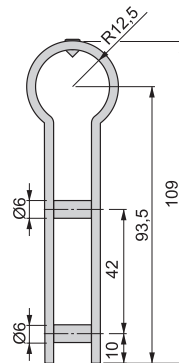
85001	65	10
--------------	-----------	-----------

Acero Inx. / Stainless steel

- Incluye 3 tornillos con tacos.
- Include 3 screws with plastic anchor.

Pinza union Tubo Ø25 a panel

Hanging clamp tube Ø25 to board



- Mecanizado
- Machining

Cod.

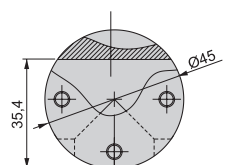
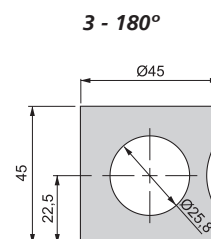
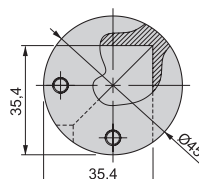
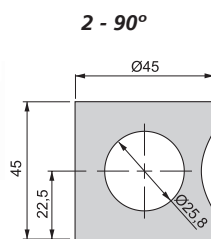


85002	65	10
--------------	-----------	-----------

Acero Inx. / Stainless steel

Nudo conexión tubo Ø25

Hanging clamp tube Ø25



Conesión
Conexion

Cod.



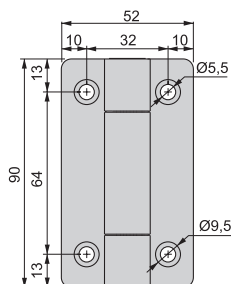
2-90°	85003	65	10
-------	--------------	-----------	-----------

3-180°	85004	65	10
--------	--------------	-----------	-----------

Acero Inx. / Stainless steel

Bisagra Cabina 90x52x2

Cabin Hinger 90x52x2



Versión Version	Cod.	
Con muelle With spring	85005 65	10
Sin muelle Without spring	85006 65	10

Acero Inx. / Stainless steel

- Tornillo recomendado Cod. 8300865
- Screw recommend Cod. 8300865

Jgo. Pomos diametro 25

Kit Door Handle Diameter 25



Cod.

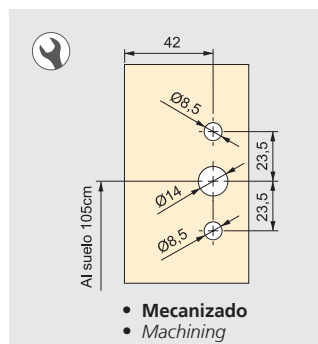
85007 65	10
-----------------	----

Acero Inx. / Stainless steel

- Incluye llave Allen.
- Include hexagonal key.

Condena Plana con Indicador

Door Lock with Indicator



Cod.

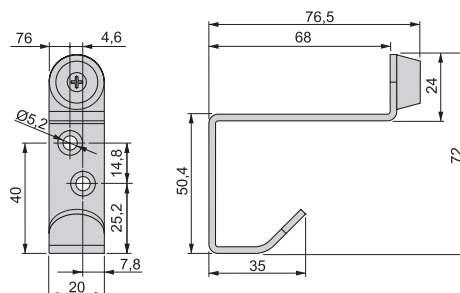
85008 65	1
-----------------	---

Acero Inx. / Stainless steel

- Incluye llave Allen.
- Include hexagonal key.

Percha con Tope

Cloths Hanger



Cod.

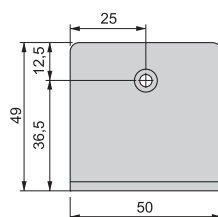
85009 65	20
-----------------	----

Acero Inx. / Stainless steel

- Para panel fenólico se recomienda tornillo Cod. 8300865
- For Phenol board it's recommend screw Cod. 8300865

Pinza Union Lateral 50x50

Lateral Support 50x50



Cod.

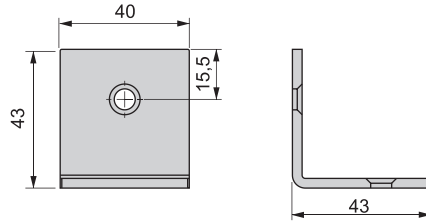
85010 65	20
-----------------	----

Acero Inx. / Stainless steel

- Tornillo recomendado Cod. 8300865
- Screw recommend Cod. 8300865

Escuadra de unión lateral 43x43

Corner fastener 43x43



Cod.



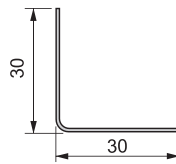
85011	65	20
-------	----	----

Acero Inx. / Stainless steel

- Tornillo recomendado Cod. 8300865
- Screw recommend Cod. 8300865

Perfil L 30x30 Acero Inox

Stainless Steel profile L 30x30



Cod.



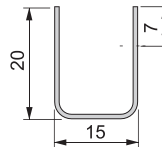
1,8 m	85012	65	1
-------	-------	----	---

Acero Inx. / Stainless steel

- Tornillo recomendado Cod. 8300865
- Screw recommend Cod. 8300865

Perfil U 20x16 Acero Inox

Stainless Steel profile U 20x16



Cod.



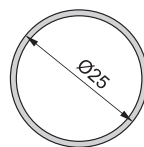
1,8 m	85013	65	1
-------	-------	----	---

Acero Inx. / Stainless steel

- Tornillo recomendado Cod. 8300865
- Screw recommend Cod. 8300865

Tubo Ø25 Acero Inox

Stainless Steel tube Ø25



Cod.

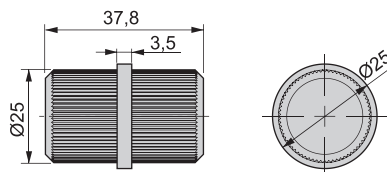


30 m	85014	65	1
------	-------	----	---

Acero Inx. / Stainless steel

Unión Tubo Ø25

Tube union Ø25



Cod.



85015	65	5
-------	----	---

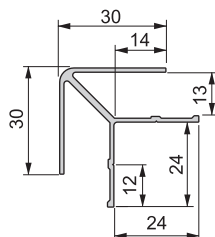
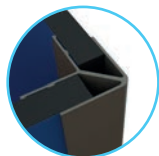
Acero Inx. / Stainless steel

PERFILES DE ALUMINIO PARA CABINAS SANITARIAS

ALUMINIUM PROFILES FOR TOILET PARTITION FITTINGS

Per. Cantonera 90° 30x30 Al Inx Sat

Profile connector 90° 30x30 Al Inx Sat



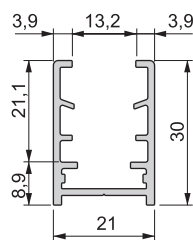
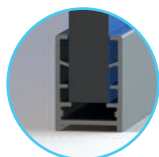
L	Cod.	69	14,4 m
1,8 m	83000	69	14,4 m
2,85 m	83001	69	⊙ m

Aluminio / Aluminium

- Montaje sin tornillos en la cara exterior.
- Assembly without screws on the external face.

Perfil Soporte Panel Al Inx Sat

Support panel profile Al Inx Sat



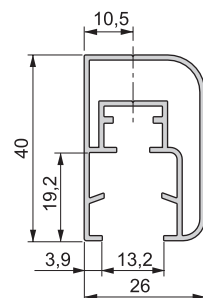
L	Cod.	69	24 m
3 m	83002	69	24 m
3,05 m	83003	69	⊙ m

Aluminio / Aluminium

- Posibilidad de unión a inglete con Escuadra Cod. 9984720
- Possibility miter joint with Bracket Cod. 9984720

Perfil Remate Superior Al Inx Sat

Top Profile Al Inx Sat



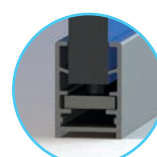
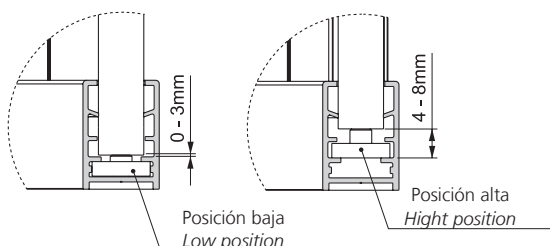
L	Cod.	69	24 m
3 m	83004	69	24 m
3,05 m	83005	69	⊙ m

Aluminio / Aluminium

- Posibilidad de unión a inglete con Escuadra Cod. 8300720
- Possibility miter joint with Bracket Cod. 8300720

Regulador altura

Height regulator

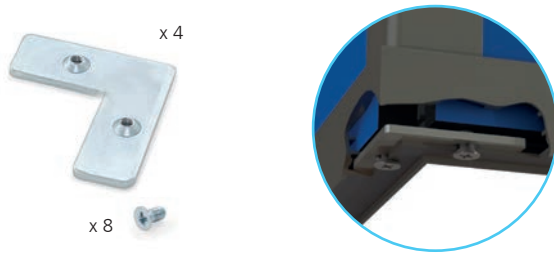


Cod.	20	1
83006	20	1

Acero / Steel

Escuadra Sop. Panel

Support Panel bracket



Cod.

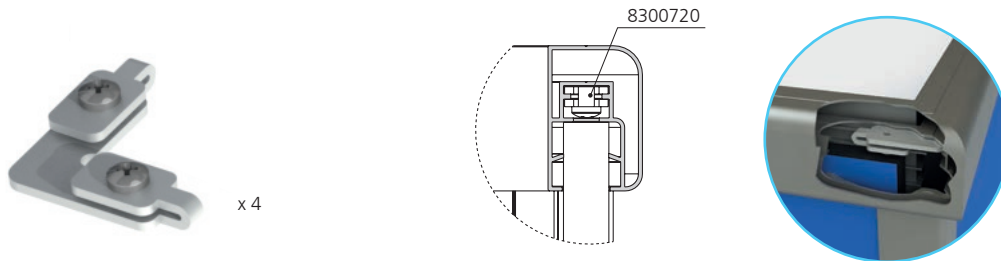


99847	20	1
-------	----	---

Acero / Steel

Escuadra Remate Sup.

Top Profile Bracket



Cod.

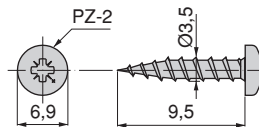


83007	20	1
-------	----	---

Acero / Steel

Tornillo Cabeza Redonda Ø3.5x9.5 Inox

Roundhead Screw Ø3.5x9.5 Inx



Cod.



83008	65	1.000
-------	----	-------

Acero Inx. / Stainless steel

- Tornillo recomendado para la fijación de panel fenólico
- Screw recommended for the fixation of phenolic board



HERRAJES PARA TAQUILLAS

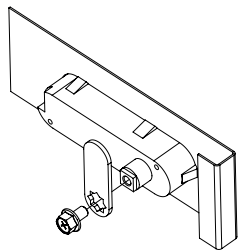
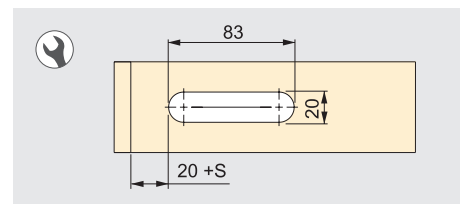
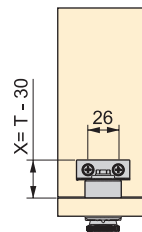
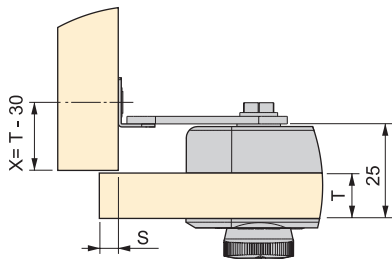
LOCKER FITTINGS

Cerradura CODE

CODE lock

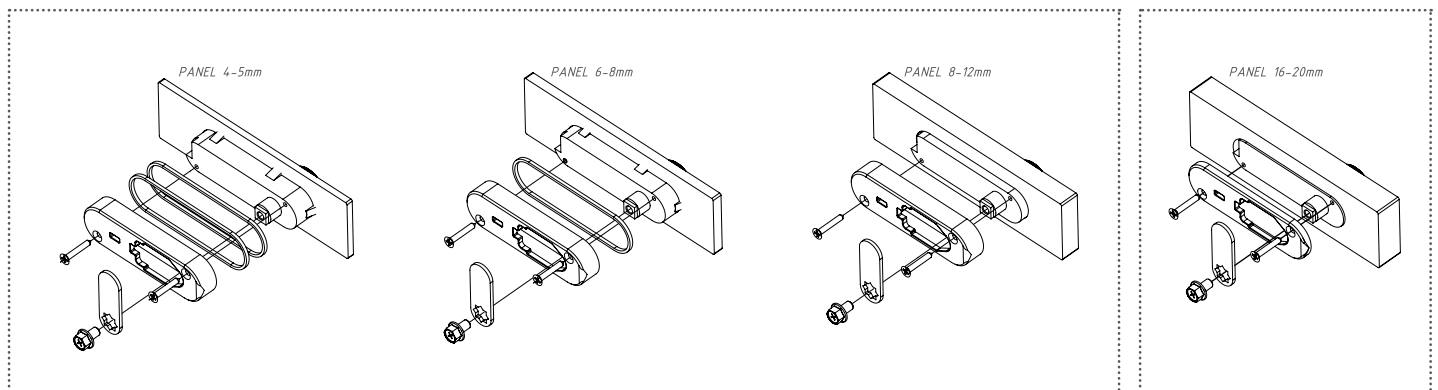
Mano Hand		Cod.	
der / right	4 - 12	80500	14 10
izq / left	4 - 12	80501	14 10
der / right	16 - 20	80502	14 10
izq / left	16 - 20	80503	14 10

Acero y plástico / Steel and plastic



- Chapa 0,6 - 1mm -- Pedir Cod. 8050214 o 8050314
- Plate 0,6 - 1-mm -- Ask Cod. 8050214 and 8050314

- Cada pedido incluye una llave de mantenimiento Cod. 8050405
- Each order includes one maintenance key Cod. 8050405

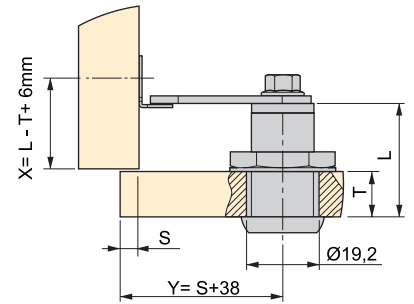
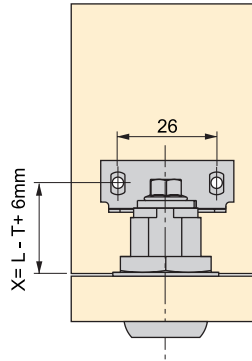


Cerradura 2651

Lock 2651

T	L	Cod.		
Max. 16mm	25	83009	07	1
Max. 20mm	30	83010	07	1

Acero / Steel



Llave maestra azul

Blue Master Key

Cod.



70109	20	1
-------	----	---

Latón y Plástico
Brass and Plastic



- Para cerradura 2651.
- For lock 2651.



BISAGRAS DE CAZOLETA Ø26

HINGES WITH Ø26 CUP

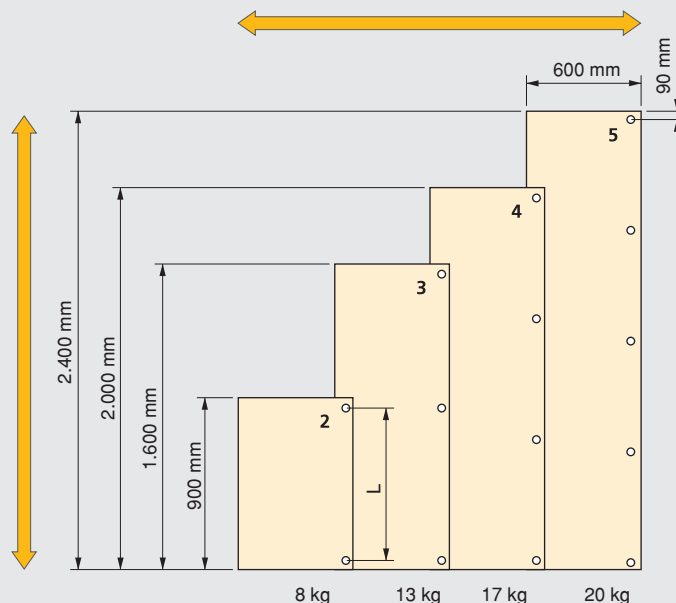
- Pistón amortiguador para el cierre Soft de la puerta.
- Sistema automático de montaje de la bisagra al suplemento.
- Grosor de la puerta de 12 a 22 mm.
- Regulable tridimensionalmente.
- Rango de taladrado de la cazoleta D = 3 ~ 7 mm.
- Regulación en profundidad mediante excéntrica.
- Integrated soft closing mechanism.
- Hinge to plate quick fixing system. Grosor de la puerta de 12 a 22 mm.
- For 12 ~ 22 mm door thickness.
- Adjustable in 3 dimensions.
- Distance to cup bore edge $d = 3 \sim 7$ mm.
- Depth adjustment by cam.

La cantidad de bisagras necesarias para cada puerta dependerá de la anchura y de la altura de la puerta así como del material en que esté fabricada. De hecho, puede variar en algunos casos concretos. Las instrucciones para la instalación de las bisagras de la derecha se facilitan únicamente a modo de referencia. En caso de duda le sugerimos ir probando. La cantidad "L" debe ser lo suficientemente grande para que la estabilidad sea la adecuada.

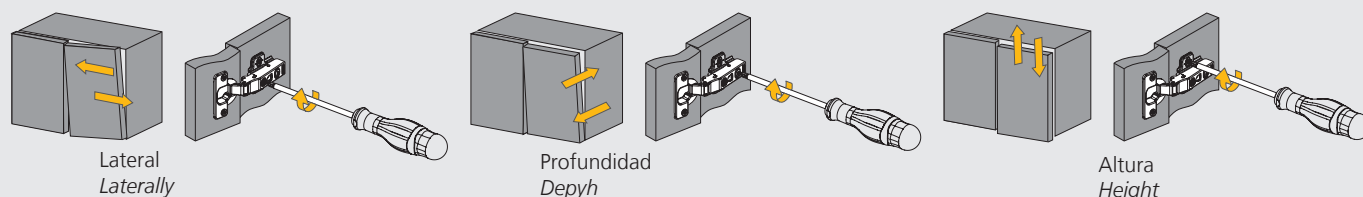
L = distancia entre las bisagras

The number of hinges needed for each door depends on the width, the height and the type of material the door is made of. It varies in particular practices. The hinge installation proposal listed on the right is only for your reference. Experiment is suggested in an uncertain situation. "L" volume shall be relatively large considering stability.

L = distance between hinges.

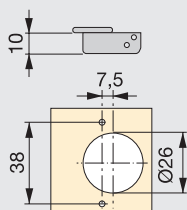


REGULACION ADJUSTMENT

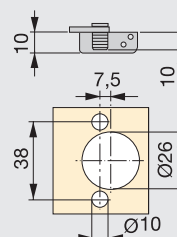


SISTEMA DE FIJACIÓN DE LA CAZOLETA CUP PLATE SYSTEM

Para atornillar:
Screw-on:

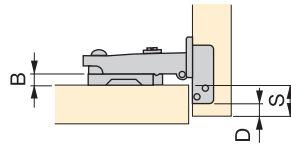
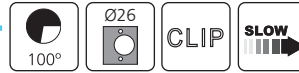


A presión:
Knock-in



Bisagra recta

Full overlay hinge



$$B = 12,5 + D - S$$

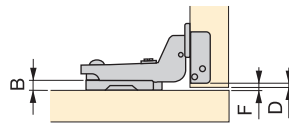
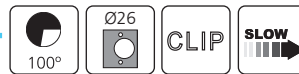
Descripción Description	Cod.		
Atornillar Screw-on	10084	07	200
A presión Ø10 Knock-in Ø10	10087	07	200

Acero / Steel

- **Suplemento NO incluido.**
- **Plate NOT included.**

Bisagra Supercodo

Insert hinge



$$B = D + F - 3,5$$

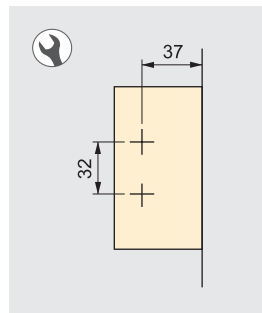
Descripción Description	Cod.		
Atornillar Screw-on	10086	07	200
A presión Ø10 Knock-in Ø10	10089	07	200

Acero / Steel

- **Suplemento NO incluido.**
- **Plate NOT included.**

Suplemento para atornillar

Screw-on plate



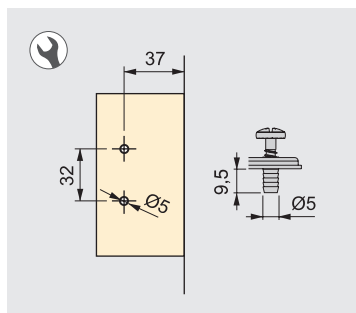
Altura Height	Cod.		
0	10025	07	200
2	10026	07	200

Acero / Steel

- **Regulación ±2mm**
- **Adjustable by ±2mm.**
- **Para panel fenólico se recomienda tornillo Cod. 8300865**
- **For Phenol board it's recommend screw Cod. 8300865**

Suplemento montaje mixto

Mixed mounting plate



Altura Height	Cod.		
0	12520	07	200
2	10578	07	200

Acero / Steel

- **Regulación ±2mm**
- **Adjustable by ±2mm.**



05

Cincado
Zinc plated

07

Niquelado
Nickel plated

15

Plástico blanco
White plastic

17

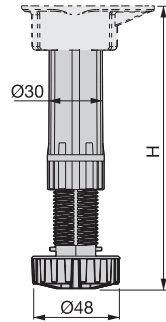
Plástico negro
Black plastic

PIES PARA TAQUILLAS

FEET PARTITION HARDWARE

Pie 100-180

Foot 100-180

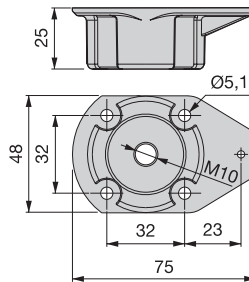


Altura Zócalo Altura Rodapé	H	Cod.		
100 - 120	98 - 140	39118	17	100
120 - 150	118 - 160	39119	17	100

Plástico / Plastic

Base montaje mediante Tornillo

Screw mounting base



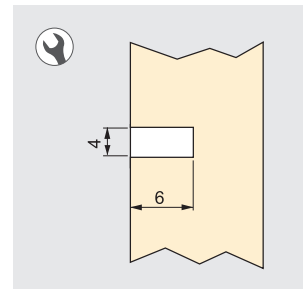
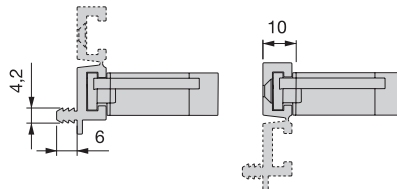
Cod.

39121	17	100
-------	----	-----

Plástico / Plastic

Pinza para zocalos montaje directo/tornillo

Direct-screw mounting clip for plinth



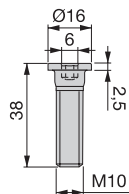
Cod.

39129	17	200
-------	----	-----

Plástico / Plastic

Tornillo M10

M10 screw



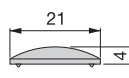
Cod.

39126	05	200
-------	----	-----

Acero / Steel

Tapón

Cap



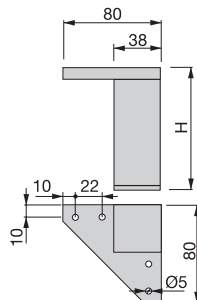
Cod.

39127	15	200
-------	----	-----

Plástico / Plastic

Alumix 1

Alumix 1

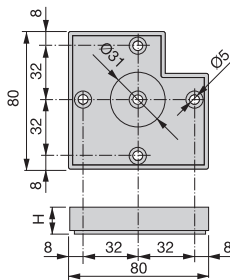


H	Cod.			
80	31676	-	25	20
100	31675	11	25	20

Plástico / Plastic

Alumix 7

Alumix 7



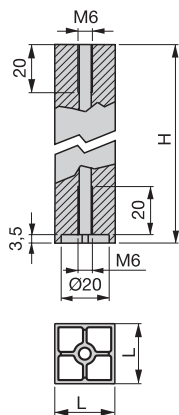
H	Cod.			
15	31185	25	25	20
30	31186	25	25	20
45	31187	25	25	20

Plástico / Plastic

- Posibilidad de combinarse entre sí consiguiendo así la altura deseada.
- Alumix may be combined to achieve the desired height.

Tubo Prisma

Prisma tube

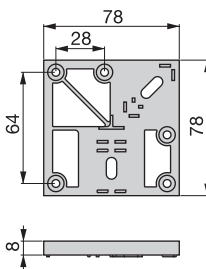


L	H	Cod.		
38	90	30858	62	24
38	130	30860	62	24

Aluminio / Aluminium

Base Prisma

Base Prisma

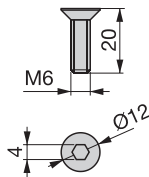


Cod.		
30790	25	24

Zamak / Zamak

Tornillo Prisma

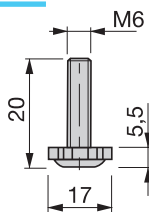
Prisma screw



Cod.		
30749	09	24
Acero / Steel		

Nivelador M6

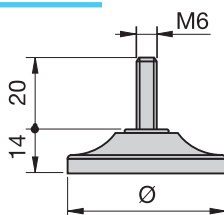
M6 leveller



Cod.		
30807	17	24
Acero y plástico Steel and plastic		

Nivelador M6

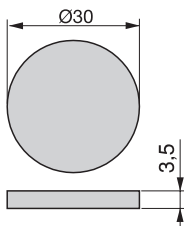
Nivelador M6



Ø	Cod.		
35	30809	25	24
43	30811	25	24
Acero / Steel			

Fieltro adhesivo

Adhesive felt



Cod.		
20042	16	630
Fibra / Fibre		

